

ADIF Autofill by K2DT v1.4

This software can be used to merge information into ADIF log files with data from QRZ.com (XML subscription required) or HamQTH.com (XML access is free). I find this particularly convenient after completing a contest. I export an ADIF file from the contest logger and process it with this software before importing into my regular log program.

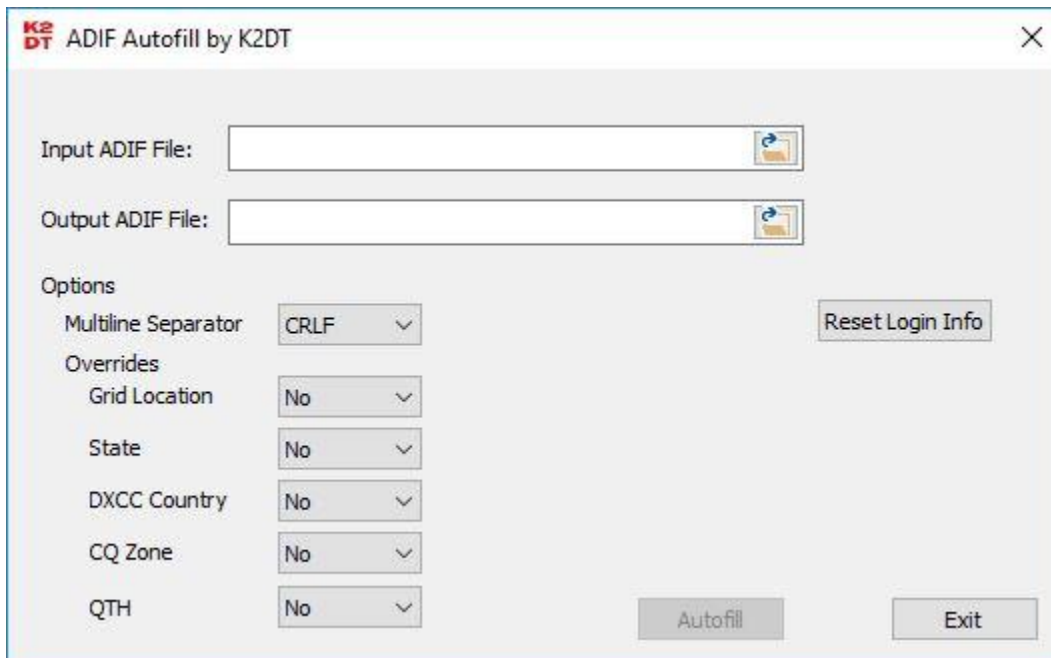
The software installer and documentation are kept up to date on my website software page at <https://k2dt.net/software>. I suggest using secure "https" when you can to validate that you are accessing my site and not a possible masqueraded site.

Because I am not a big developer with funds to spend on code signing certificates, your antivirus software is very likely to complain about the program because of the lack of code signing and because there aren't thousands of installations they know of. Be sure to direct your antivirus program to allow the installer and software to remain on your computer. I have done this with Norton Antivirus and expect most have similar capabilities.

After installing the software, you should have a shortcut on your desktop like this.

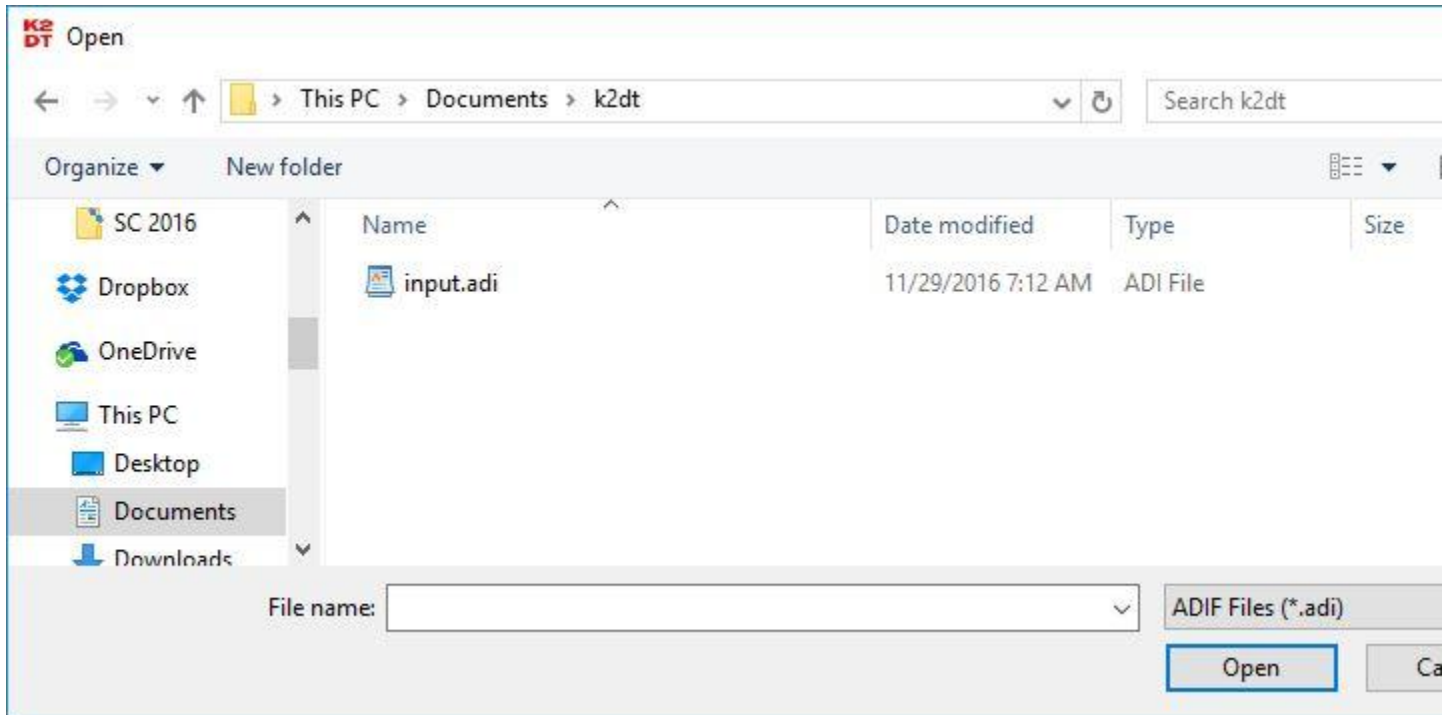


Double-click the shortcut to start the program. You then come to the main screen.



ADIF Autofill by K2DT v1.4

First select the input (source) ADIF file that was exported by your logging program or other software. Click on the folder icon to the right of the “Input ADIF File” field and you will get a window like this:

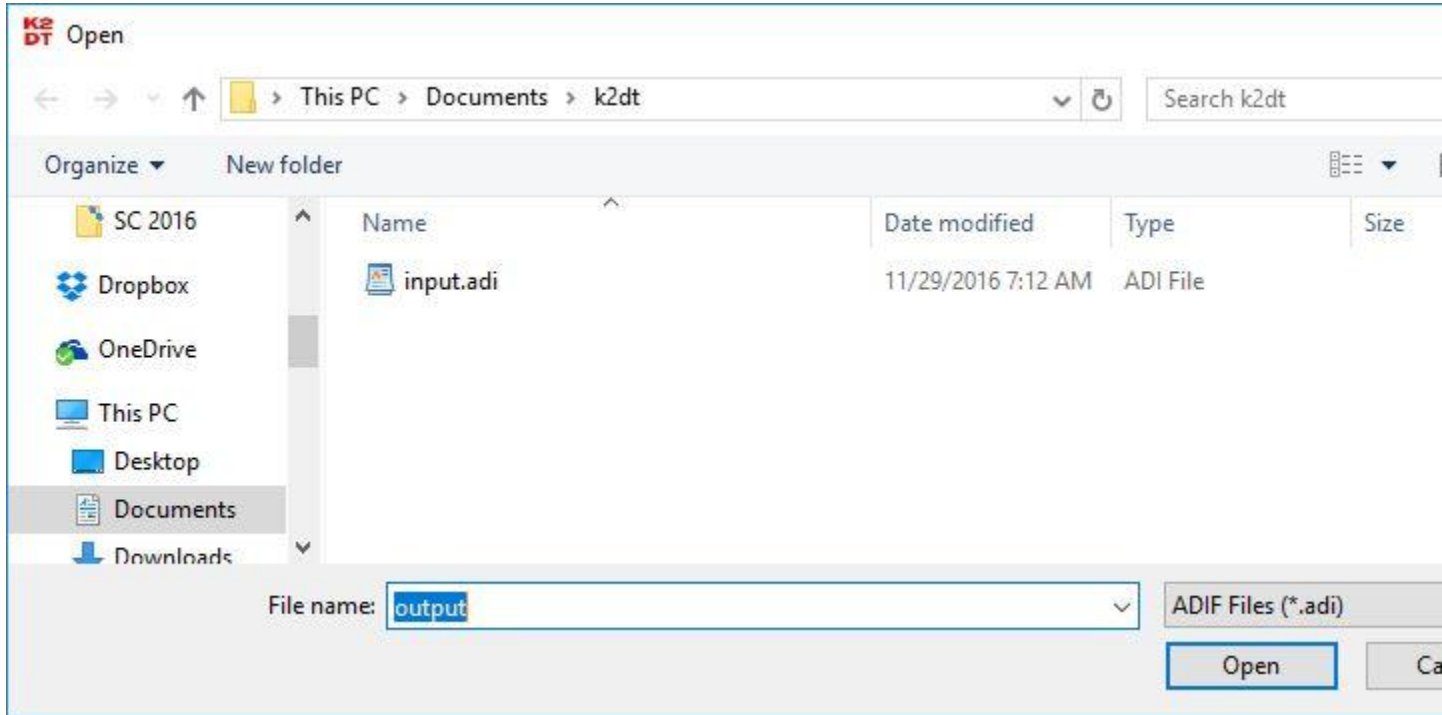


You can navigate through your directory structure, then select the file and click “Open”. Or you can double-click on your file.

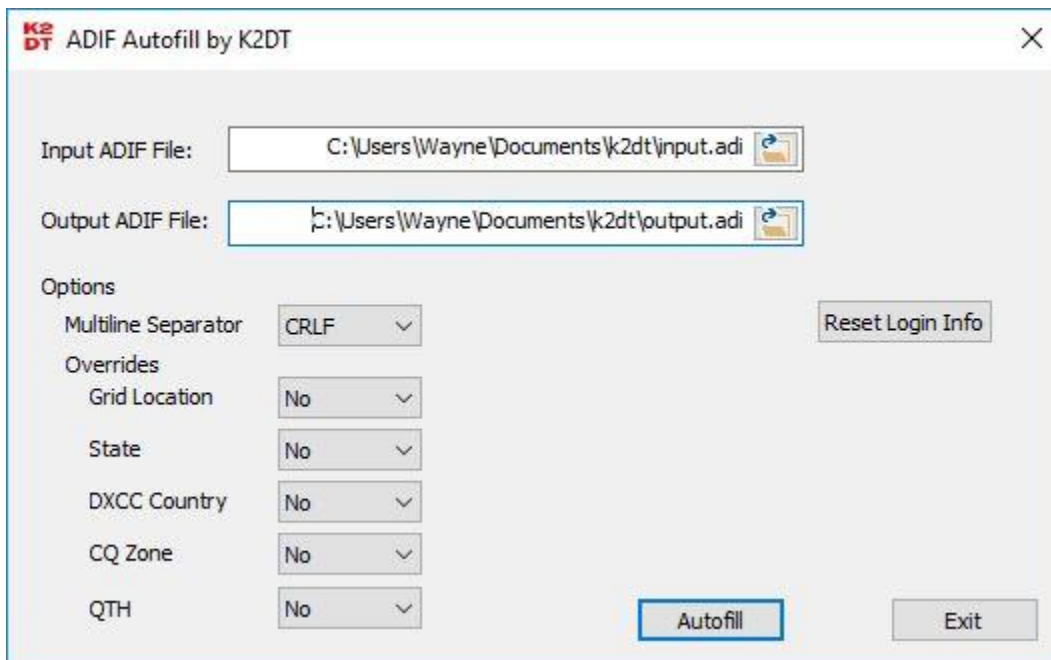
You will then be brought back to the main window.

Click on the folder icon to the right of the “Output ADIF File” field to select directory you want the output to go into. In this example I used the same directory as the input but it doesn’t need to be the same. You can select an existing file for output (be careful as it will be overwritten) or type in a new file name as illustrated below. You don’t need to include the .adi extension as it will be added for you.

ADIF Autofill by K2DT v1.4



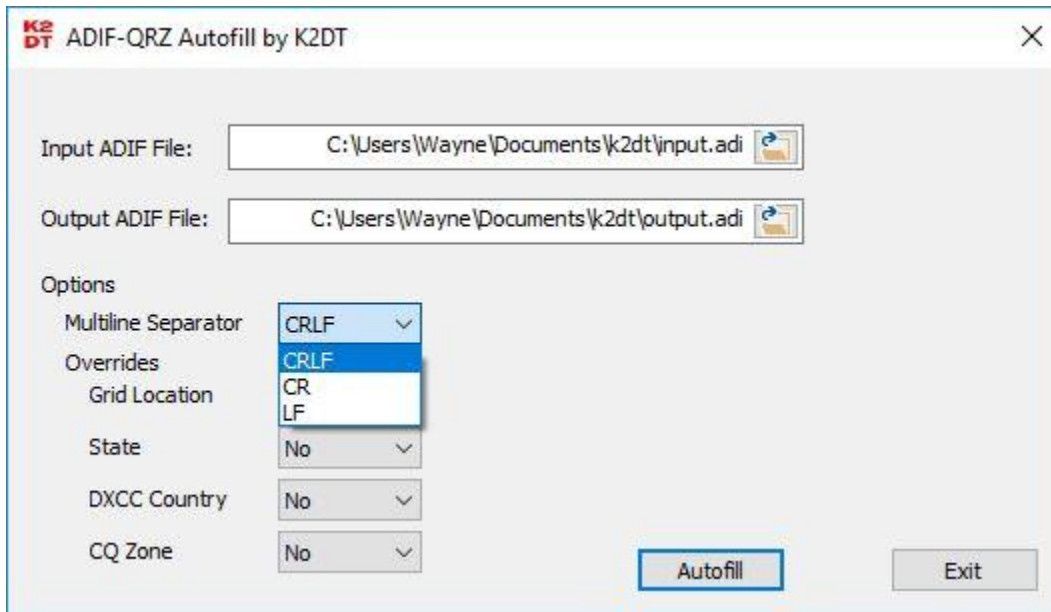
Again you are brought back to the main window. If the input file doesn't exist or if the output file does exist, you will see warnings to the right of the file names.



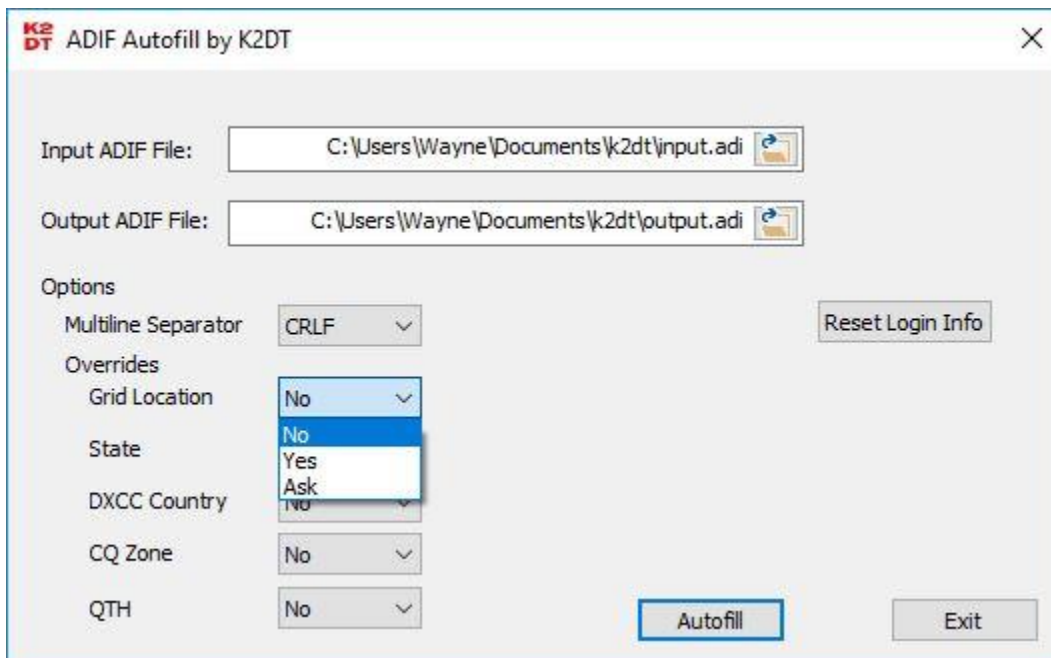
The options default as shown the first time you run the program and are the safest settings. Your settings are saved when you press Autofill to process the files.

ADIF Autofill by K2DT v1.4

“Multiline Separator” is used to specify whether to use a carriage return (CR), linefeed (LF) or both for multiline records. This affects the address record only. Use of both (CRLF) is compliant with the ADIF standard, but your logging program importing the output file may work better with a different setting.

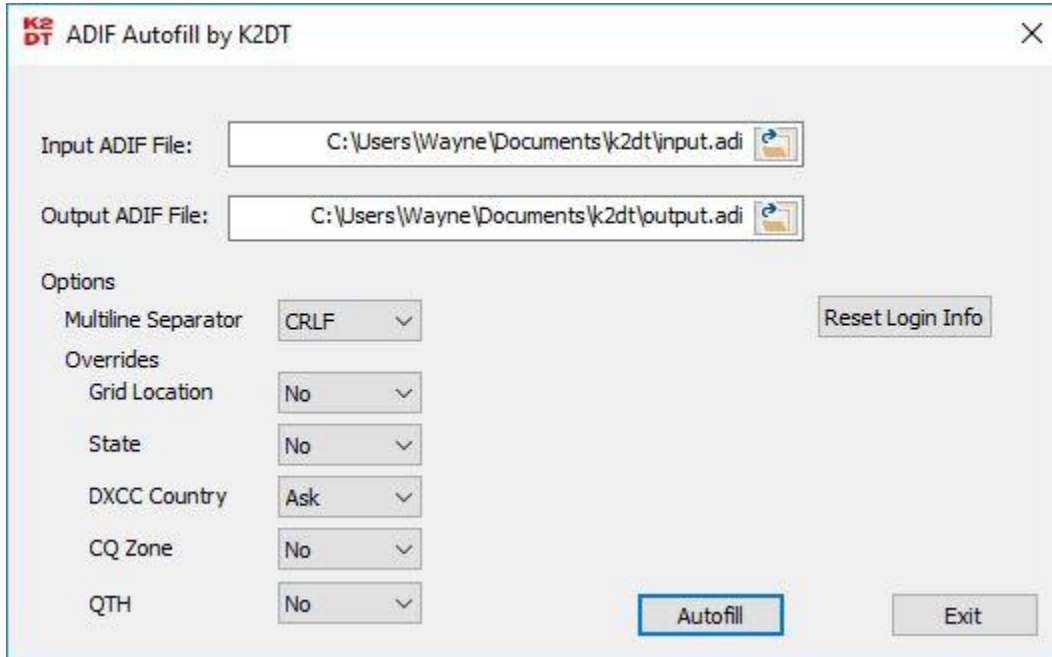


The “Overrides” allow you to select behavior of the program when there is a conflict between a QSO record and QRZ.com data in the specified fields. “No” means to never override the field, “Yes” means to always override the field with the QRZ.com value, and “Ask” will prompt you for directions on a per-conflict basis.



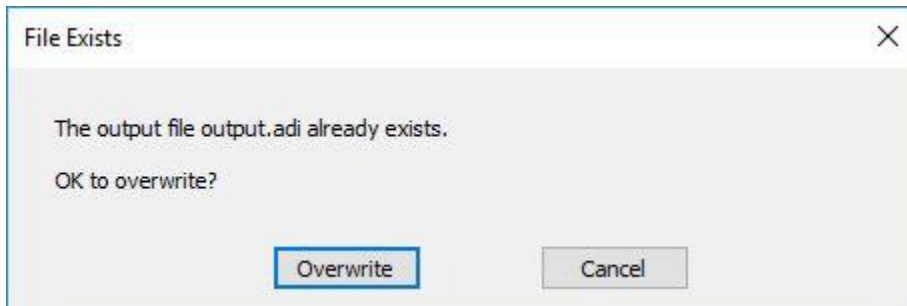
In this example, I have selected “Ask” for the DXCC Country field.

ADIF Autofill by K2DT v1.4

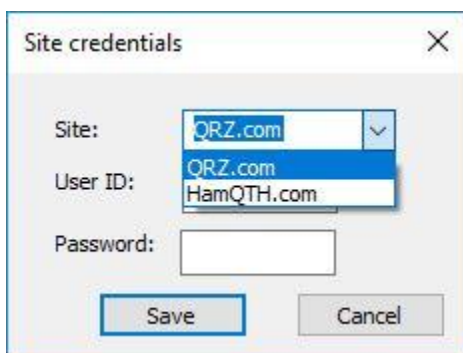


Make sure you have the proper files selected (you can change your files by going back through the last two steps). Then press the “Autofill” button to start processing.

If your output file already exists, you get one last warning before it is overwritten:



Once processing starts, the software will contact QRZ.com or HamQTH.com to fetch the needed XML data. The first time you run the program, it will of course not have your user ID and password which are required. A window will pop up so you can fill these in.



ADIF Autofill by K2DT v1.4

The password field will not display the password as you type and will display a dot for each character instead.



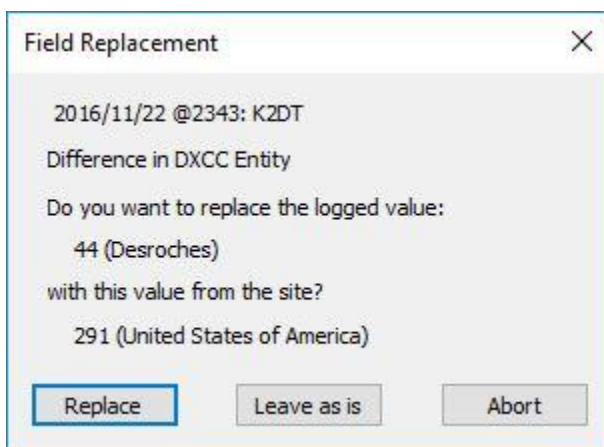
A dialog box titled "Site credentials" with a close button (X) in the top right corner. It contains three input fields: "Site:" with a dropdown menu showing "HamQTH.com", "User ID:" with a text box containing "mylogin", and "Password:" with a text box containing seven dots. At the bottom, there are two buttons: "Save" and "Cancel".

Once you have provided valid credentials you should not see this window again until they become invalid such as when you've changed your password or your XML subscription has lapsed.

The "Reset Login Info" button on the main page can be used to erase the web site and login credential information stored by the program. This is convenient if multiple users use the same computer but use their own site credentials. It also allows you to switch between using QRZ.com and HamQTH.com for the XML data.

The main screen will indicate that the program is running and will update as each record is processed. The time required will be roughly proportional to the number of entries as each log entry generates a new query and response with the specified site.

If you specified "Ask" for any of the conflict resolution options, you may get popup windows like this:



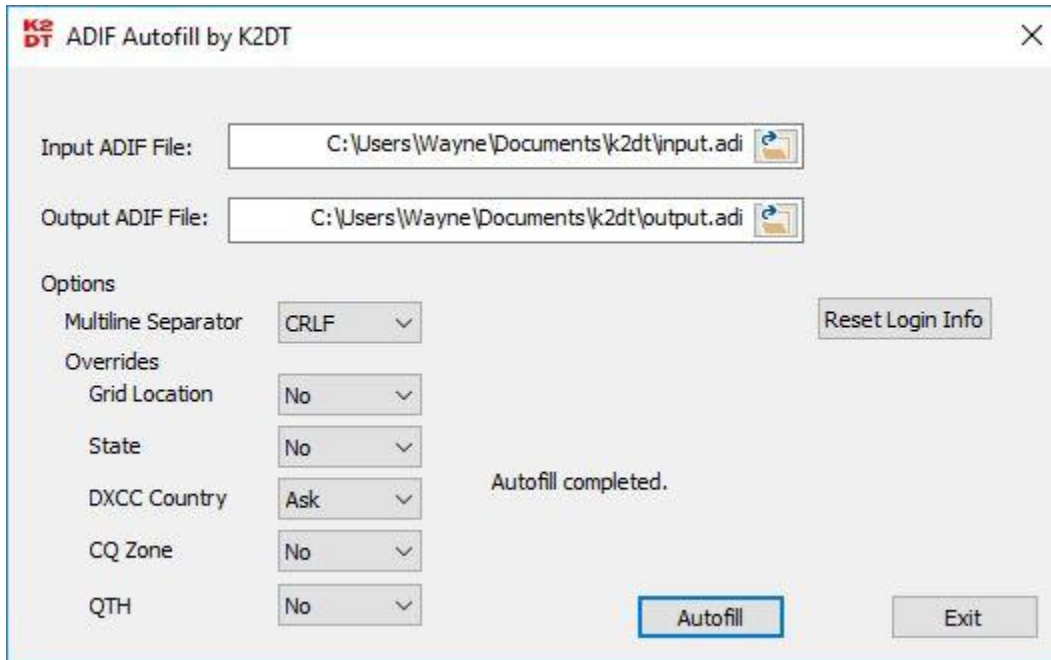
A dialog box titled "Field Replacement" with a close button (X) in the top right corner. The text inside reads: "2016/11/22 @2343: K2DT", "Difference in DXCC Entity", "Do you want to replace the logged value:", "44 (Desroches)", "with this value from the site?", "291 (United States of America)". At the bottom, there are three buttons: "Replace", "Leave as is", and "Abort".

Select the action you want to take for each conflict as they arise.

The "Abort" button can be used if you want to stop processing and retry with different settings. This is handy if you are being asked a lot about fields you decided should be set to "Yes" or "No" rather than "Ask".

ADIF Autofill by K2DT v1.4

On completion, the message will change to “Autofill completed”. If there is an error indicated, make sure your input file is valid and your hard disk is not full.



One field change is performed automatically. If a four-character grid square is included that matches the beginning of a longer grid square designation on QRZ.com, the longer designation will be substituted.

Fields that will be added if not already present are name, address, qsl_via, gridsquare, dxcc, state, country, lat, long, cnty, country, email, web, cqz, ituz and iota.

Restrictions

The software uses an approximately 2 kilobyte window for reading the input file. It will fail to fetch information for a single tag that will not fit within this window. I don't expect this to be an issue with normal ADIF log files, but if your software is using huge extended tags you may encounter a parse error.

Caution

As with any software, be very careful with backing up your files in case of errors. Pay attention to warnings that a file will be overwritten. Check the results. While I hope this is as useful to you as it is to me, this software is provided as-is with no warranty or claims that it is suitable for your particular use case.

Feedback

ADIF Autofill by K2DT v1.4

Your feedback is welcome. You can email me at k2dt@k2dt.net or comment on an appropriate blog entry on my site at k2dt.net.

73, Wayne K2DT